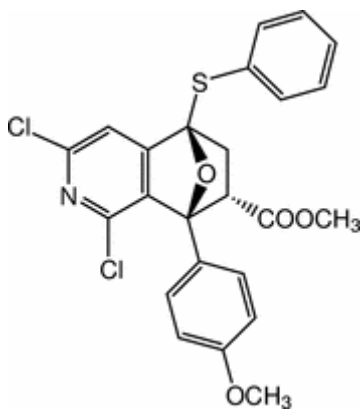


Dspace@NITR, <http://dspace.nitrkl.ac.in/dspace>



Acta Cryst. (2002). E58, o1402-o1404 [[doi:10.1107/S1600536802021013](https://doi.org/10.1107/S1600536802021013)]

Methyl (1SR,8RS,10SR)-3,5-dichloro-1-(4-methoxyphenyl)-8-(phenylthio)-11-oxa-4-azatricyclo[6.2.1.0^{2,7}]undeca-2,4,6-triene-10-carboxylate

A. Usman, T. K. Sarkar, N. Panda and H.-K. Fun

Abstract: In the title molecule, C₂₄H₁₉Cl₂NO₄S, the cyclohexane ring tends towards a boat conformation and the two tetrahydrofuran rings adopt envelope conformations. The crystal packing structure is built from infinite molecular chains, stabilized by an intermolecular C-H...O close contact, running along the *b* direction.

Author: N Panda is presently with National Institute of Technology, Rourkela India

For Eprints Contact: niranjnnpanda@gmail.com