

Characterization of Indian Fly ashes for Mine Stowing Purposes

Naik, H.K. and Mishra, M.K.

Abstract

The objective of this study was to select the best fly ash material which can replace river bed sand to fill underground coal mine voids. To achieve the objectives, this study examined the suitability of seven numbers of Indian fly ashes for filling in the underground coal mine voids based on their physico-chemical, morphological and mineralogical characteristics. The physical properties such as bulk density, specific gravity, particle size distribution, specific surface area, porosity, moisture content, pH etc. have been determined. The chemical and mineralogical properties were also determined in the laboratory by X-ray diffraction (XRD) analysis, scanning electron microscopy (SEM), energy-dispersive X-ray spectroscopy (EDX) and X-ray fluorescence (XRF) studies. From the chemical characterization it is found that the fly ash samples are enriched predominantly with silica (SiO_2), alumina (Al_2O_3) and iron oxides (Fe_2O_3) along with a little amount of CaO and all the seven fly ash samples tested fall under the class F fly ash category. In addition to these, the fly ash samples also contain some trace elements in negligible amount. The mineral phases identified in the fly ash samples are quartz, mullite, magnetite, and hematite. The particle morphological analysis revealed that the fly ash particles are almost spherical in shape which would favor hydraulic pipeline transport to mine void filling areas. From the particle size and shape point of view the fly ashes tested may be considered as an alternative to conventional mine void filling material.

Keywords— Fly ash, material characterization, mine void filling, specific gravity, density

1. Introduction

Coal-based thermal power plants all over the world facing serious problems of handling and disposal of the ash produced. The high ash content (35–55%) of the Indian coal makes this problem more complex. Safe disposal of the coal ash and the large storage area required are major concerns of thermal power plants. Hence attempts are made to utilize the ash rather than dump it in the vicinity of the power plants in the ash ponds. Underground voids have the maximum potential to accommodate fly ash in bulk as compared to the same in other areas of application. An in-depth understanding of the physical and chemical properties, as well as engineering and leaching behavior of fly ash is required. This paper reports the work which was carried out in this context for bulk utilization of fly ash in mine filling applications.

Literature review reveals that hydraulic sand stowing is widely used world over in underground coal mines to minimize surface subsidence. Now-a-days, the Indian mining industry is facing an acute shortage of river bed sand due to its increasing application in civil engineering

applications. As a result, a large number of underground coal mines are left unfilled after excavation of coal, which leads to surface subsidence. Thus the mining industry is searching since long for an alternative filling material which should be available in sufficient quantity near to the mine site at minimal cost. Fly ash is explored to fulfill these requirements. Fly ash which is generated in thermal power plants as a coal combustion by-product (CCB) occupies a substantial land area in the vicinity of power plants in the form of ash ponds and is responsible for various environmental pollutions and ecological imbalances. The effective bulk utilization of this unused fly ash locked in the ash ponds has emerged as a challenge for the power plant authorities and environmental scientists. Fly ash has many geotechnical applications including cement, concrete, and bricks, aggregates, and grouts, construction of embankments, as a fill material, base and sub-base coarse material (Bayat, 1998; Foner *et al.*, 1999; Behera & Mishra, 2011). At present only about 50% of the ash generated is being used for various applications viz. as a stabilizer of sub-grade (Pandian, 2004), and sub-bases in pavement construction (Sridharan *et al.*, 1996), as a filling material in mines (Pandey and Kumbhakar, 2007), as a material for construction of roads and embankments (Murthy, 1996; Bumzoo *et al.*, 2005), as a structural fill (DiGioia and Nuzzo, 1997; Leonards and Bailey, 1982) etc. There are numerous successful attempts on the utilization of fly ash either alone or mixed with lime, gypsum or both (Mishra and Rao, 2006) and it has been recognized that its use in mine filling applications has enough potential for its bulk utilization. In these studies, it has been demonstrated that the fly ash properties can be improved with addition of lime, cement, and other chemicals. Those areas cited above are hence having limitations in accommodating fly ash in bulk. Underground mine void filling is an important and major avenue for bulk utilization if attributes of fly ash can be suitably modified. For effective utilization in this area, it is desirable that the material should be chemically inert and devoid of combustible matter that might cause spontaneous heating and fire risk to coal mines. Apart from this, particle shape and size, density, specific gravity, porosity, moisture content, pH etc. plays important roles in transporting this material hydraulically to mine void filling areas. Therefore, the physico-chemical and mineralogical characterization is a pre-requisite before its effective utilization in mine filling applications. Such studies would be of great help in making a judicious choice for filling mine voids and evolving a methodology to work out finer details for the same. This exercise can also pin point and supplement for many other similar application areas (Moreno *et al.*, 2005).

Department of Mining Engineering, National Institute of Technology, Rourkela, India
Email address of 1st author: hrushi1920033@gmail.com

Table 1: Sample ID and their source of collection

Sample	Source of collection of	Sample	State
--------	-------------------------	--------	-------

ID	samples	Code	
F ₁	Ennore Thermal Power Plant, Ennore	(ETPS)	Tamilnadu
F ₂	National Aluminium Company, Angul	(NALCO)	Orissa
F ₃	IB Thermal Power Plant, Jharsuguda	(OPGC)	Orissa
F ₄	Patratu Thermal Power Plant, Ranchi	(PTPS)	Jharkhand
F ₅	Rourkela Steel Plant, CPP-II, Rourkela	(RSPII)	Orissa
F ₆	Super Thermal Power Plant, NTPC, Angul	(STPP)	Orissa
F ₇	Talcher Thermal Power Plant, Talcher	(TTPS)	Orissa

Many researchers have conducted experimental studies in order to assess the suitability of fly ash as a mine void filling material, mine spoil amendment for vegetative reclamation, mine haul road construction, etc. (Ozerskii and Ozerskii, 2003; Dutta *et al.*, 2009; Jirina and Jan, 2010; Ram and Masto, 2010). The fly ash particles typically range from less than 1 µm to 150 µm in size and are generally finer than Portland cement (Siddique, 2007). It has also been reported that fly ash is mainly composed of silt-sized material having particle dimensions ranging from about 100 µm to sub-micron size (Chang *et al.*, 1977; Metcalfe *et al.*, 2006). It is found that fly ash is 25% lighter than river bed sand which will facilitate smooth flow in the pipelines as it produces less head loss and requires less energy consumption for its transportation (Ghosh *et al.*, 2006). The chemical composition of fly ash is greatly influenced by the geological and geographical characteristics of the coal deposit, quality of coal and its degree of pulverization, the combustion techniques followed, ash handling and removal efficiencies of electrostatic precipitators or other collection devices used (Singh *et al.*, 2002; Sarkar *et al.*, 2006). These factors may also cause characteristics of the ash to vary, invariably, from one plant to another, sometimes even at the same power plant. The nature of the mineral matter and organic constituents in coal also determines the chemical composition of the resulting ash (Gupta *et al.*, 1998; Liu *et al.*, 2004). Physical properties also help in classifying the coal ashes for various engineering purposes and some are related to engineering properties. So an investigation was carried out to evaluate the suitability of fly ash from seven different sources to underground void filling characteristics. The properties investigated in this study are specific gravity, grain size distribution, specific surface area, porosity, bulk density, chemical composition, morphological characteristics, pH, etc. Fly ash particles are spherical in shape and well graded which would offer least resistance to flow in hydraulic pipelines because of the well-known ball bearing phenomena. Fly ash with good pozzolanic properties and ultrafine particle size distribution is an ideal material for slurry preparation and pipeline transportation due to its improved fluidity and workability during filling mine voids.

Chemically, fly ash consists of silica, alumina, iron oxide, and calcium oxide with varying amounts of unburned carbon and little amount of other earth materials. The mineralogical compositions of fly ashes are identified by

many researchers using powder X-ray diffraction analysis. From the X-ray diffraction spectrums, it is found that the major crystalline phases present in fly ash are quartz (SiO₂), mullite (Al₆Si₂O₁₃) and minor phases are iron oxides such as magnetite (Fe₃O₄) and hematite (Fe₂O₃) (White & Case, 1990; Moreno *et al.*, 2005; Metcalfe *et al.*, 2006;). Based on the chemical composition, fly ash has been classified into two classes, i.e. class F and class C (ASTM C-618). The chief difference between class F and class C fly ash is in the amount of silica, alumina, iron oxide, calcium, and loss on ignition (LOI) present in the fly ash. When SiO₂+Al₂O₃+Fe₂O₃ is 70% or more, it is described as class F fly ash and when this sum is between 50 and 70%, then the fly ash is called a class C fly ash. Usually class C fly ash contains more calcium oxide than the class F fly ash (Vassilev & Vassileva, 2006). The presence of CaO (free lime) in significant quantity in the fly ash will possess both pozzolanic and cementitious properties which is very important ingredient from strength gain point of view in the filled mass.

2. Materials and methods

2.1. Materials

Fly ash samples used in the present investigation were procured from seven numbers of different coal-fired thermal power plants as situated in different parts of the country (designated as F₁, F₂, F₃, F₄, F₅, F₆, and F₇). They were collected directly from hoppers attached to electrostatic precipitators in gunny bags and transported with care to the place of experimentation. The location details of the power plants are given in Table 1.

2.2. Methods

2.2.1. Study of physical properties

Some of the physical properties that are of particular interest when fly ash is used for filling in underground coal mine voids are particle size distribution, specific gravity, bulk density, specific surface area, moisture content, porosity, pH, etc. Specific gravity is one of the important physical properties needed for the use of coal ashes for mine filling applications. The specific gravity (G) of the ash samples were determined using a stopper bottle having a capacity of 50 ml as per the guidelines provided by the American Society of Testing Materials (ASTM D 854). For the sake of accuracy, the average specific gravity was obtained from the results of five repeated tests. In general, the specific gravity of coal ash is around 2.0 but vary between 1.6 and 3.1. Because of the low value of the specific gravity of coal ashes compared to soils, ash fills tend to result in low dry densities. The reduction in unit weight is advantageous in the case of its use as a backfill material for retaining walls since the pressure exerted on the retaining structure as well as on the foundation structure will be less. The other application areas which can get benefit of low density include embankments especially on weak foundation soils, reclamation of low-lying areas, etc. The variation of specific gravity of the coal ash is attributable to a combination of many factors such as gradation, particle shape, and chemical composition. It is known that coal ash comprises mostly of glassy cenospheres and some solid spheres. The reason for a low specific gravity is either due to

the presence of large number of hollow cenospheres from which the entrapped air cannot be removed, or the variation in the chemical composition, in particular iron content, or both. The bulk density (ρ) was determined experimentally by following the procedures of Indian standards (IS Codes, 1987) and the porosity was calculated by using the following formula:

$$\phi = \left(1 - \frac{\rho}{\rho_c}\right) \times 100 \% \quad (1)$$

The gradational properties of the fly ash samples were determined by using Malvern particle size analyzer (UK) that uses soft imaging mechanism with the wet dispersion method in water. This is a laser diffraction particle sizer which works on the principle of laser diffraction and utilizes photo sedimentation method. Grain size distribution indicates if a material is well graded, poorly graded, fine or coarse, etc. and also helps in classifying the coal ashes. Coal ashes are predominantly silt sized with some sand-size fraction. Leonards and Bailey (1982) have reported the range of gradation for fly ashes and bottom ashes which can be classified as silty sands or sandy silts. The pond ashes consist of silt-size fraction with some sand-size fraction. The bottom ashes are coarser particles consisting predominantly of sand-size fraction with some silt-size fraction. Based on the grain-size distribution, the coal ashes can be classified as sandy silt to silty sand. The values of the D_{60} and D_{10} for each sample were determined from the particle size distribution curves and coefficient of uniformity (C_u) was calculated by using the following formula:

$$C_u = D_{60}/D_{10} \quad (2)$$

The specific surface area of the ash samples were determined by using a Blaine's apparatus (ASTM C 204) with Portland cement as the standard reference material. The following equation was used (Singh & Kolay, 2002) to calculate the specific surface area of the ash samples:

$$\text{Specific surface area (cm}^2/\text{g)}, \quad S = \{S_s (1-e_s) \sqrt{e_s^3 T_s}\} / \{\sqrt{e_s^3 T_s} (1-e)\} \quad (3)$$

Where S is the specific surface area of the ash sample, S_s the specific surface area of the Portland cement (3460 cm²/g), e is the void ratio of the ash sample, e_s the void ratio of the cement (=0.5), T_s the measured time interval of manometer drop (for cement it is 77.18 s) and T is the measured time interval of manometer drop for ash sample. The study of specific surface area of soils is widely recognized as a means to understand their physical and engineering behavior. Even though coal ashes are primarily silt/sand-sized particles and their specific surface is expected to be very low, results need to be obtained for completeness and for use in mine void filling applications.

Scanning electron microscopy (SEM) studies were carried out to determine the morphology of the ash particles using SEM (JEOL JSM 6480 LV, Japan). Pandian *et al.* (1998) demonstrated that the coal ash particles are generally cenospheres, leading to low values of specific gravity. The particle morphology of the fly ash samples were analyzed from photomicrographs. The particle shape was quantified by using image analysis and documented with photomicrographs.

2.2.2. Study of the chemical & mineralogical composition

The chemical properties of the coal ashes mainly influence the environmental impacts including contamination of surface and subsurface water with heavy toxic metals present in the coal ashes, loss of soil fertility around the plant sites, etc. that may arise out of their use/disposal as well as their engineering properties. Hence a detail data on chemical composition, morphological studies, pH, total soluble solids etc. is necessary. Chemical compositions suggest the possible areas of application of coal ash. Roode (1987) reported that loss on ignition is generally equal to the carbon content. The amount of SiO₂ or SiO₂ + Al₂O₃ in fly ash influences the pozzolanic activity. Minnick (1959) reported that a relatively high percentage of carbon decreases the pozzolanic activity. The Indian fly ashes contain silica, alumina, iron oxide, and calcium oxide. The silica content in fly ashes ranges between 38 to 63%, the alumina content ranges between 27 and 44%, the calcium oxide is in the range of 0 to 8%. Thus all the Indian coal ashes satisfy the chemical requirements for use as a pozzolana. The chemical and mineralogical characterization of fly ash is not only beneficial for knowing its composition, but also helps in its classification for its possible utilization as mine void filling material.

A SEM (Model JEOL JSM 6480 LV, Japan) with EDX and auto sputter coater was used to determine the chemical composition (major elements and their oxides) of the fly ashes. Since the ash samples are non-conducting in nature, they were coated with gold with a Bio-RAD E-5200 coating unit. The chemical compositions of the ash samples, calculated as major oxides, were obtained with the help of the above EDX set-up. EDX technique was used for identifying the elemental composition of the specimens. The EDX analysis system works as an integral feature of a Scanning Electron Microscope (SEM) and cannot operate on its own without the latter. It is an analytical tool predominantly used for chemical characterization of samples. It relies on the investigation of a sample through interactions between light and matter, analyzing X-rays in its particular case i.e. each element of the periodic table has a unique electronic structure and, thus, a unique response to electromagnetic waves. Spectroscopy data is often portrayed as a graph plotting counts vs. energy. The peaks correspond to characteristic elemental emissions. The release of X-rays creates spectral lines that are highly specific to individual elements; thus, the X-ray emission data can be analyzed to characterize the sample in question.

XRF analysis was carried out in Philips PW2400 X-ray fluorescence spectrometer (XRF) machine. It provides one of the simplest, accurate and economic analytical methods for the determination of the chemical composition of many types of materials. It is non-destructive and reliable, requires little sample preparation and is suitable for solid, liquid and

Table 2. Physical properties of fly ash samples

Parameters	F ₁	F ₂	F ₃	F ₄	F ₅	F ₆	F ₇
Colour	Gray	Gray	Gray	Dark gray	Light gray	Light gray	Light gray
Specific gravity (G)	2.20	2.43	1.98	2.35	2.46	2.19	2.21
Bulk density (ρ), g/cm ³	1.75	1.6	1.67	1.89	1.95	1.99	1.80
Porosity (ϕ), %	20.5	34.2	15.7	19.6	20.732	9.135	18.55
Moisture content, %	0.20	0.8	0.25	0.15	0.398	0.22	0.401
Specific surface area, m ² /g	1.24	1.20	0.458	0.187	0.408	0.428	0.395
Particle size analysis							
D(4,3), μ m	171.61	14.27	48.204	91.26	48.214	59.79	65.608
D(3,2), μ m	8.5	5.04	13.105	32.05	13.115	14.003	15.175
D ₉₀	988.5	30.831	113.727	187.61	113.757	144.133	158.144
D ₅₀	11.2	8.367	29.972	74.573	29.871	39.375	43.47
D ₁₀	3.81	2.649	7.184	18.013	7.173	7.248	7.966
Coefficient of uniformity, C _u	14.8	1.15	1.12	0.70	1.13	1.09	1.07

powdered samples. It can be used for a wide range of elements, from sodium (11) to uranium (92), and provides detection limits at the sub-ppm level.

The ash samples were also evaluated for their mineralogical composition by conducting XRD Spectrometer (Philips Analytical X-ray B.V.) studies, using a graphite monochromator and Cu K α radiation. The ash samples were scanned for 2 θ angle ranging from 5⁰ to 80⁰. These studies were carried out primarily to identify the mineral phases. Coal ashes predominantly consist of quartz, mullite, and iron oxides such as magnetite and hematite which occur in crystalline form (Shao, 2004). Sahu (1991) reported that the nature and properties of the minerals mainly depend upon the source of coal. The process of ashification in turn controls the grain fusion, grain morphology as well as crystal growth. The mineral phases present in the collected fly ash samples were identified by XRD technique. The X-ray radiation most commonly used is that emitted by copper, whose characteristic wave length for the K radiation is $\lambda=1.5418\text{\AA}$. The X-ray diffraction patterns of the ash samples were collected by the above equipment, operated at 40kV and 30mA. The detector was scanned over a scattering angle 2 θ with a 0.05⁰ step size and dwell time of 2 s per step. From the resulting powder diffraction patterns, the crystalline phases were identified with those in the JCPDS (Joint Committee on Powder Diffraction Standards) data files and labeled above the respective peaks (Smith and Jenkins, 1996; Erol *et al.*, 2007).

3. Results and discussion

3.1. Physical properties

A series of tests were conducted to determine the specific gravity of the fly ash samples. The average values of specific gravity of the fly ash samples are reported in Table 2. These values ranged from 1.98 to 2.46, indicating a large variation between ash sources. As reported by Bumjoo *et al.* (2005), the wide range in specific gravity is attributable to two factors: (1) chemical composition, and (2) presence of hollow fly ash particles. The low specific gravity of fly ash samples of F₁, F₃, F₆, and F₇ are explained by their low iron oxide contents and, conversely, the high specific gravity of fly ash samples of F₂, F₄, and F₅ by their high iron oxide content. Different amounts of hollow particles present in fly

ash samples also cause a variation in apparent specific gravity. Guo *et al.* (1996) examined the chemical compositions of hollow and solid fly ash particles separately, and the data revealed that hollow-particle fly ash had significantly lower iron content (4.5%) than solid particle fly ash (25%). The specific surface area of the fly ash samples were also determined and presented in Table 2. It varies between 0.187 - 1.24 m²/g. The bulk density of the fly ash samples ranged between 1.60 and 1.99 g/cm³. Though there is little difference in values, comparatively, the average specific gravity and bulk density of fly ashes were found to be less than that of river bed sand. The porosity of the bulk fly ash samples varied between 9.135 and 34.2%.

The results of particle size analysis of the fly ash samples are summarized in Table 2 and their particle size distribution curves are shown in Figures (1-3). The particle size distribution curves of fly ash samples show more or less similar distribution patterns. The source F₄ possesses the coarsest and F₂ is the finest. Corresponding values of specific surface area and mean particle diameter (D₅₀) are 0.187 m²/g & 74.573 and 1.20 m²/g & 8.367 respectively. The grain size distributions for the fly ash samples indicated that the fly ash samples consist of sand-sized (<4.75 mm), silt-sized (0.075-0.002 mm) and clay-sized (<0.002 mm) particles. The ash samples are almost uniformly graded (Table 3).

Majority of particles in F₁, F₂, F₃, F₅, F₆, and F₇ fly ash samples are less than 50 μ m size. Only one sample i.e. F₄ fly ash has majority particles more than 50 μ m size. From Table 2 it is also revealed that C_u < 6 for all the fly ash samples except fly ash sample F₁. Therefore, it may be concluded that the fly ash sample F₁ is well graded and all other samples are poorly graded as per the classification and gradation of soils (ASTM D-2487).

Table 3. Results of particle size analysis of fly ash samples

Sample ID	Size range (%)		
	< 1 μ m	1 μ m - 50 μ m	> 50 μ m
F ₁	3.66	87.80	08.54
F ₂	2.77	92.73	04.50
F ₃	1.02	68.20	30.78
F ₄	0.10	34.37	65.53
F ₅	1.02	68.40	30.58
F ₆	0.97	58.07	40.96
F ₇	0.90	55.16	43.94

The SEM photomicrographs magnified at 5000x depicted the presence of particles with different shapes viz. spherical, hollow (cenosphere), broken, plerosphere (i.e. a sphere within another sphere), tubular and some other irregular shaped particles (Figures 4 and 5). SEM photomicrographs of fly ash samples show overgrowth on the surface of the ash particles due to alkali activation. Agglomeration of ash particles are also observed for F₄ and F₇ samples. The photomicrographs reveal that the fly ash samples consist of mostly spherical particles. The spherical ash particles with much brighter surface are identified as 'cenospheres'. The majority of the particles are spherical in shape in case of F₁ fly ash. The spherical particle morphology of the fly ash samples helps them to flow and blend freely in fly ash-water suspensions. Therefore, it can significantly improve the rheology of the slurry over conventional sand-water mixture and result in a frictionless flow in the stowing pipelines, causing less wear and tear of the pipeline inner surfaces.

3.2. Chemical and mineralogical composition

The major constituents of these samples are; silica (SiO₂), alumina (Al₂O₃) and iron oxide (Fe₂O₃). Minor quantities of calcium oxide (CaO), magnesium oxide (MgO), sodium oxide (Na₂O), potassium oxide (K₂O), rutile (TiO₂) and other compounds are also observed to be present in lesser quantity. From Table 4 it is observed that in all the fly ash samples, SiO₂ content ranges from 56.77 to 68.48%, Al₂O₃ content ranges from 22.90 to 36.95%, Fe₂O₃ content ranges from 0.15 to 3.52% and CaO content ranges from 0.36 to 2.19%. The sum total of SiO₂, Al₂O₃, and Fe₂O₃ accounts for more than 90% of the total composition in all the fly ash samples investigated. The abundance of SiO₂ (about 62% of the total composition) in all the fly ash samples, would help in increasing the strength of the filling material and offer better load bearing capacity in taking the load of the overlying strata after filling the mine voids. Due to the presence of a small amount of free lime (CaO) content (<3%), the fly ash samples possess very negligible pozzolanic or cementing properties. Comparatively, the F₁ (ETPS) fly ash sample contains higher amounts of CaO than the other fly ash samples and therefore, more pozzolanic in nature which is selected for further study. The presence of higher amount of CaO in fly ash samples helps in improving the strength of the filled mass. F₁ (ETPS) fly ash is comparatively better than other fly ashes for mine filling applications. Since the sum total of SiO₂, Al₂O₃, and Fe₂O₃ is more than 70% and CaO content is less than 6% in all the fly ash samples tested, they are classified as class F fly ash (ASTM C-618).

The elemental composition of fly ash samples are presented in Table 5 which were obtained from XRF analysis. The results show that all the fly ash samples are abundant in Si and Al, and possess minor concentrations of Fe, Ca, Mg, K, Ti, and P. In the ash samples, the elements present in decreasing order of their abundance are O, Si, Al, Fe, Ti, K, Ca, P and Mg.

The XRD patterns of the various fly ash samples are presented in Figures (6-9). It is noticed from the XRD patterns that the fly ash samples consist predominantly of the crystalline phase quartz, mullite, hematite and magnetite in a matrix of aluminosilicate glass. From the diffractograms it is clear that they have similar diffraction patterns. The XRD patterns of the fly ash samples have peaks characteristics of quartz (SiO₂)-Q, mullite (Al₆Si₂O₁₃)-M, and iron oxides such as magnetite (Fe₃O₄)-U and hematite (Fe₂O₃)-U which occur in crystalline form (White & Case, 1990). However, the most common phases and minerals found in these ash samples include quartz, and mullite. Quartz may be considered as the primary mineral present in all the fly ash samples and indicated by sharp peaks in the diffraction patterns.

In all the fly ash samples, the most intense peak near $2\theta=26^\circ$ is identified as the main peak due to quartz (101). Mullite or aluminosilicate mineral is also present in all the fly ash samples and the peak near $2\theta=25.50^\circ$ are identified as mullite. The peaks which occur near $2\theta=16.5^\circ$ are identified as refractory mullite (Sarkar *et al.*, 2006). Along with the alumino-silicate mineral, the occurrence of strong peaks close to $2\theta=26.49^\circ$ indicates quartz. The presence of heavy minerals like magnetite and hematite are identified by their respective peaks near $2\theta=21.4^\circ$ and $2\theta=26.2^\circ$.

4. Conclusions

The primary aim of this study was to select the best mine filling material out of the seven fly ashes tested to undertake further investigation. Fly ash samples tested in this study possess more or less similar physico-chemical and mineralogical properties. Comparatively, (F₄) PTPS fly ash is coarser in size and all other fly ashes are finer. The SEM photomicrographs revealed spherical particle morphology of the fly ash samples. ETPS (F₁) fly ash sample is comparatively having more number of spherical particles compared to other fly ash samples. This feature of the fly ash would create a lubricating effect due to the well-known "ball-bearing" phenomena which would result in a frictionless flow in the stowing pipelines. In addition, due to improved rheology, it would also help in reducing the energy cost in pipeline transportation during hydraulic stowing operations. ETPS fly ash is having more specific surface area which would also facilitate possible surface modification by chemical additives for smooth flow in the pipelines. The fly ash samples are mainly constituted of silica, alumina with low amounts of iron oxide and little amounts of CaO, MgO, P₂O₅, K₂O, and TiO₂. The presence of silica in abundance would increase the strength and the presence of CaO would give cementing properties after filling the mine voids. The ETPS fly ash is having good particle size distribution ($C_u > 6$) compared to other fly ashes. Therefore, out of the seven fly ashes studied it is concluded that the ETPS fly ash possess more favorable properties compared to other fly ashes for stowing in underground coal mine voids.

Table 4. Chemical composition of fly ashes obtained from EDX study

Sample ID	Elements (weight %)							
	SiO ₂	Al ₂ O ₃	Fe ₂ O ₃	CaO	K ₂ O	TiO ₂	Na ₂ O	MgO
F ₁	56.77	31.83	2.82	0.78	1.96	2.77	0.68	2.39
F ₂	59.15	34.80	3.52	0.76	2.62	1.14	0.05	0.05
F ₃	59.64	35.60	0.86	0.85	1.86	0.91	0.06	0.67
F ₄	68.48	22.90	0.15	0.36	0.91	1.46	0.03	0.06
F ₅	62.41	31.65	0.17	2.19	2.63	0.00	3.42	0.08
F ₆	62.25	30.47	2.48	1.92	1.39	0.58	0.02	1.90
F ₇	61.46	36.95	0.59	2.02	2.01	0.31	0.07	0.26

Table 5. Elemental composition of fly ashes obtained from XRF study

Elements/ Sample ID	Elements (weight %)							
	FA-1	FA-2	FA-3	FA-4	FA-5	FA-6	FA-7	FA-8
	ETPS	NALCO	OPGC	PTPS	RSP	STPS	TTPS	ZPS
Ca	0.58	0.479	0.416	0.456	0.476	0.588	0.497	0.263
Fe	3.84	3.73	3.26	4.41	4.84	4.46	3.47	3.15
K	0.76	0.685	0.78	1.07	0.918	1.13	0.62	0.92
Mg	0.314	0.309	0.274	0.228	0.347	0.464	0.203	0.327
Na	0.086	0.070	0.056	0.064	0.075	0.082	0.058	0.067
P	0.157	0.142	0.062	0.116	0.137	0.210	0.123	0.112
S	0.044	0.072	0.025	0.033	0.124	0.040	0.029	0.055
Si	21.56	19.97	20.31	19.98	18.48	20.96	20.73	20.89
Ti	1.145	1.286	1.099	1.087	0.989	1.01	1.195	1.239
Al	16.14	17.70	15.29	13.95	13.418	15.79	15.58	17.516

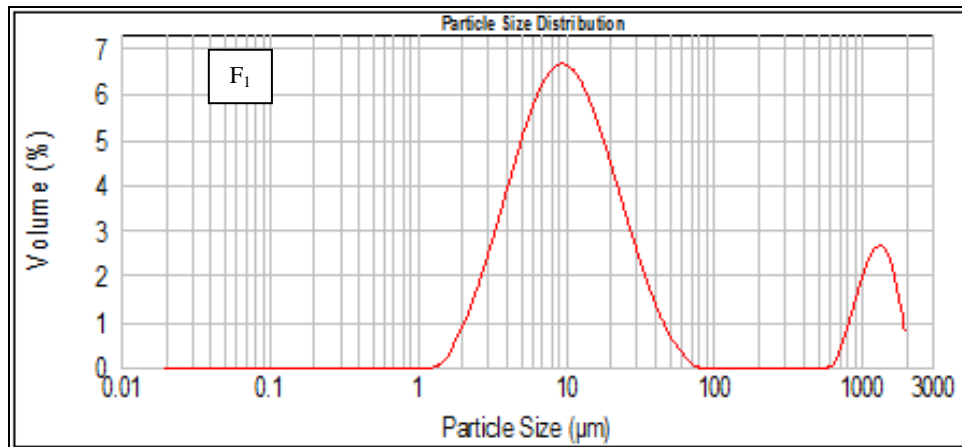


Figure 1. Particle size distribution curve of fly ash sample F₁

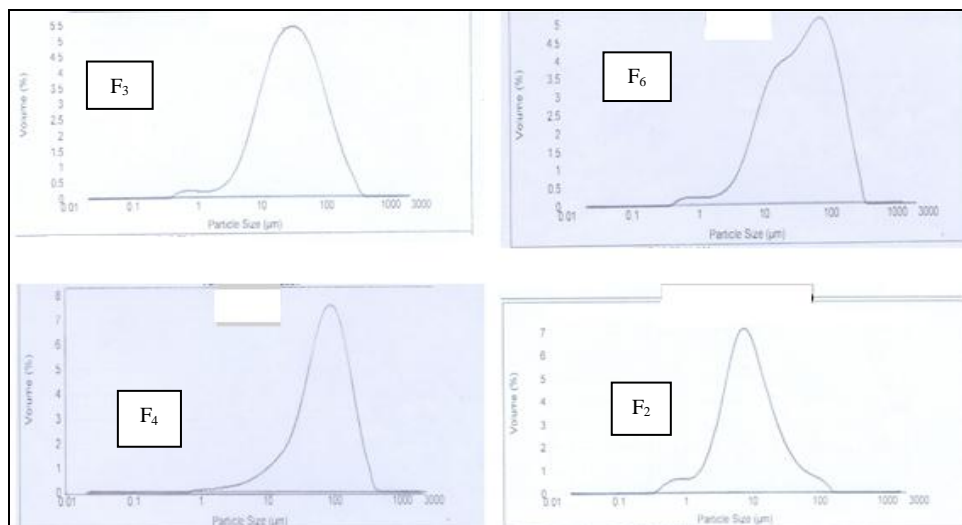


Figure 2. Particle size distribution curve of fly ash samples F₃, F₆, F₄ and F₂

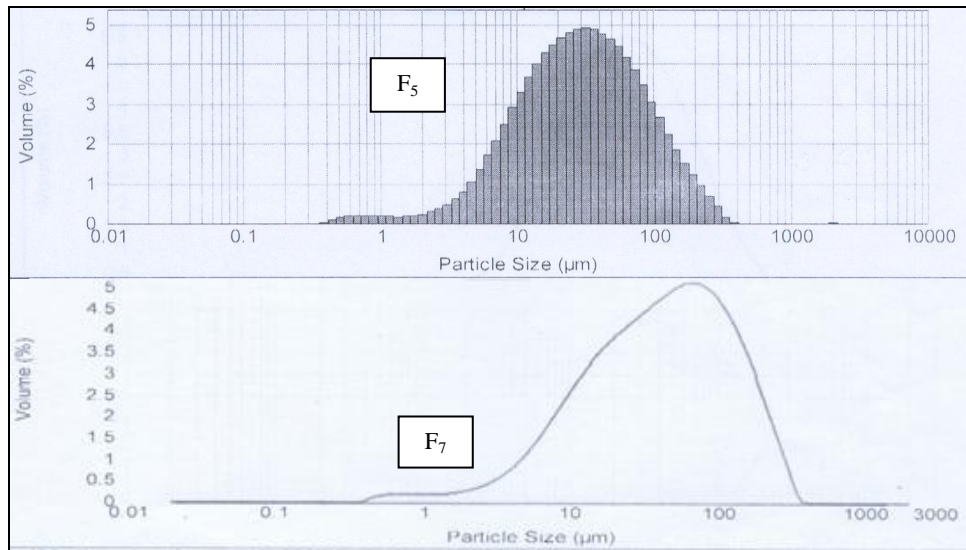


Figure 3. Particle size distribution curve of fly ash samples F₅ and F₇

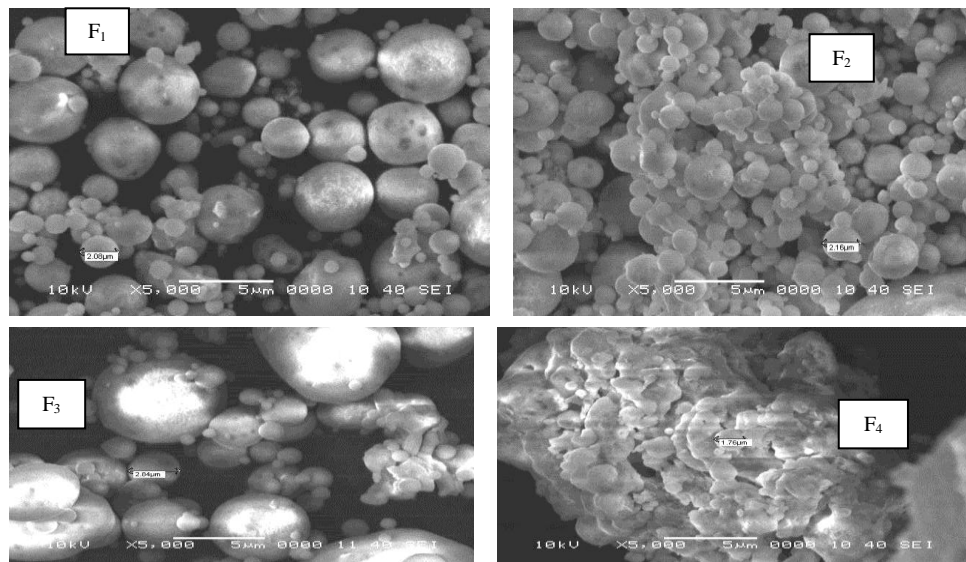


Figure 4. SEM Photomicrographs of F₁, F₂, F₃ and F₄ fly ash samples at 5000x

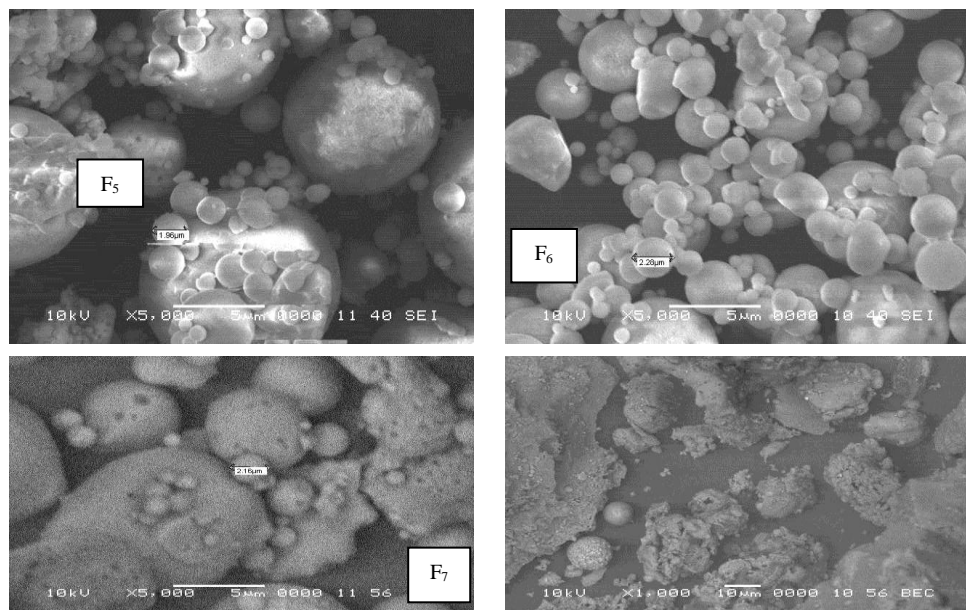


Figure 5. SEM Photomicrographs of F₅, F₆, and F₇ fly ash samples at 5000x and 1000x

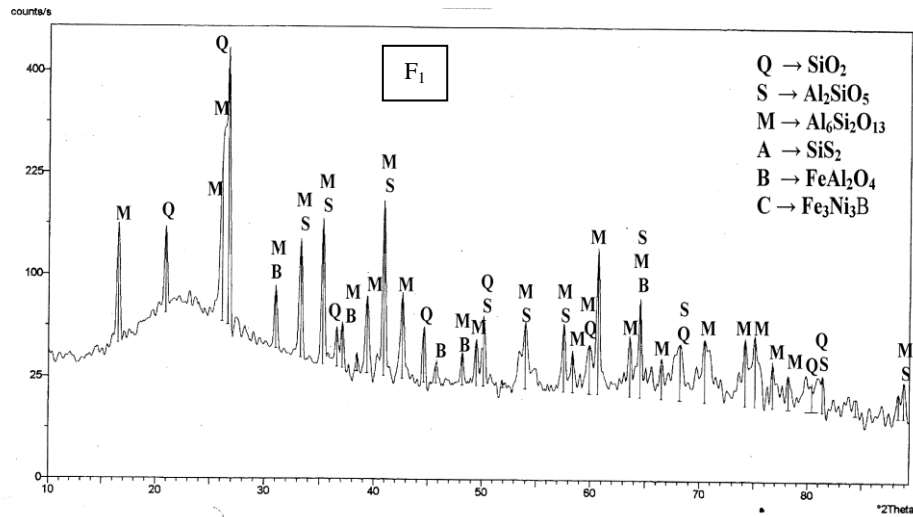


Figure 6.XRD Pattern of F₁ fly ash sample

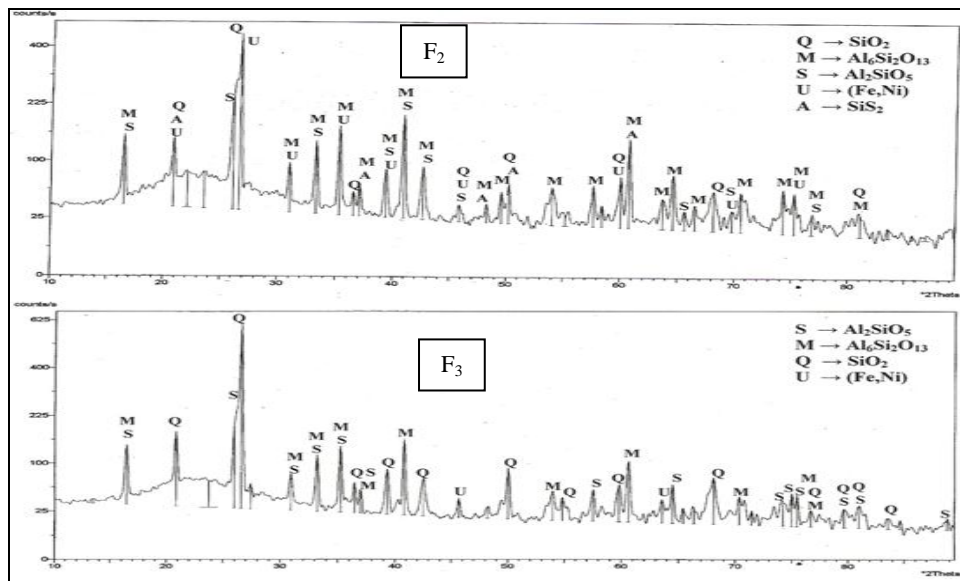


Figure 7.XRD Pattern of F₂ & F₃ fly ash samples

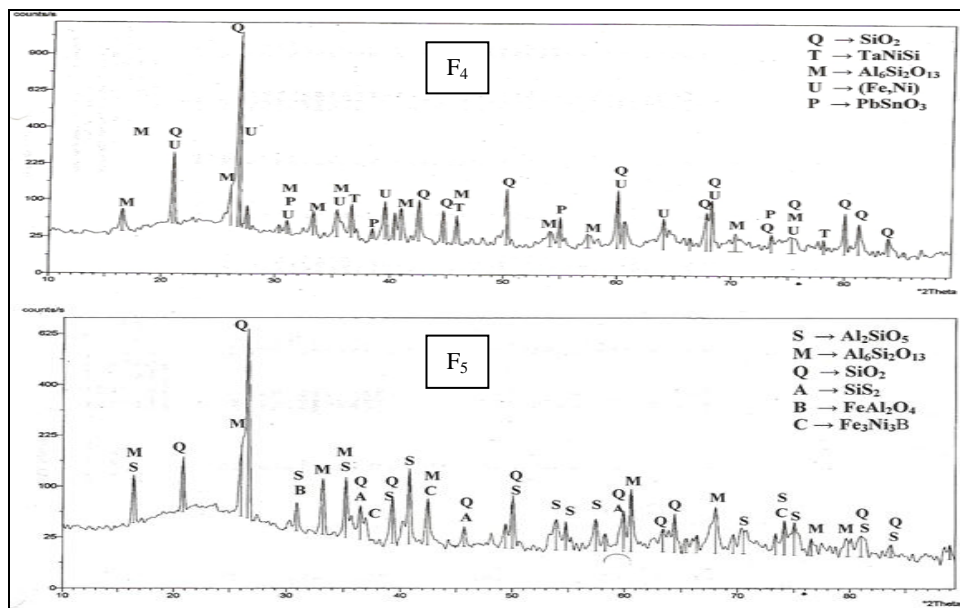


Figure 8.XRD Pattern of F₄ and F₅ fly ash sample

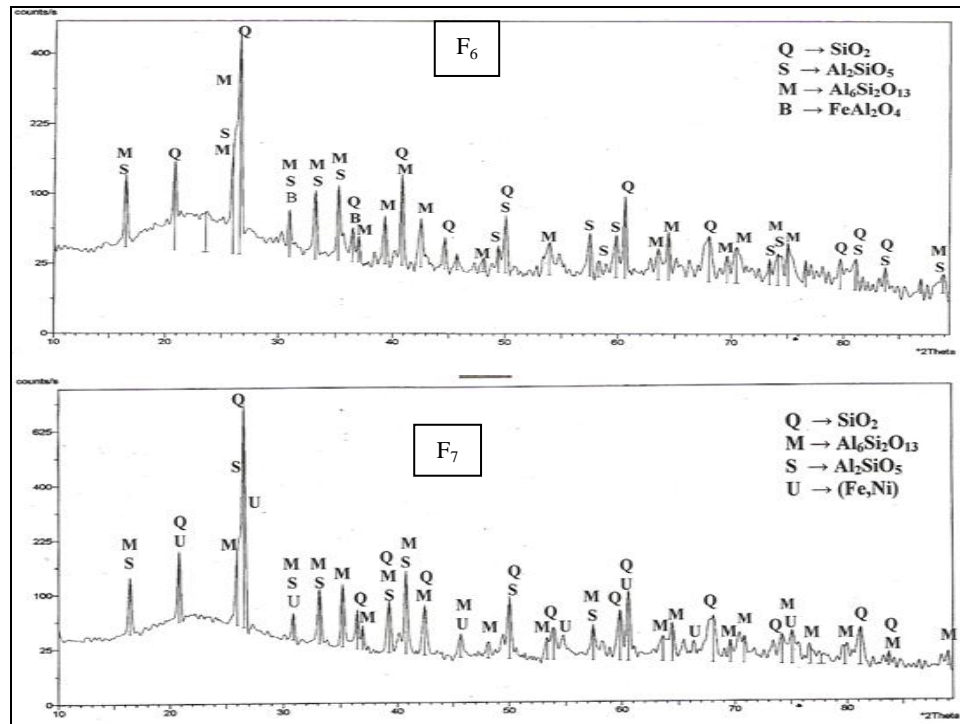


Figure 9.XRD Pattern of F₆ and F₇ fly ash sample

References

- ASTM C 204 84 Standard Test method for fineness of Portland cement by air permeability apparatus Annual Book of ASTM Standards, American Society for Testing and Materials, Philadelphia Vol.04.01, 1984, 56-162.
- ASTM C 618 94 Standard Specification for coal Fly ash and raw or calcined natural pozzolana for use as a mineral admixture in Portland cement concrete. Annual Book of ASTM Standards, American Society for Testing and Materials, Philadelphia, Vol.04.08, 1995, 304-306.
- ASTM D 2487-11 Standard Practices for Classification of Soils for Engineering Purposes (Unified Soil Classification System).
- ASTM D 854 - 92 Standard test methods for specific gravity of soils. Annual Book of ASTM Standards, American Society for Testing and Materials, Philadelphia, Vol. 04.08, 1995, 80-83.
- Bayat, O., 1998.Characterization of Turkish fly ashes. *Fuel* 77, 1059-1066.
- Behera, B., Mishra, M.K., 2011. Strength behaviour of surface coal mine overburden – fly ash mixes stabilized with quick lime. *Int. Journal of Mining, Reclamation and Environment*, DOI: 10.1080/17480930.2011.552285.
- Bumjoo, K., Monica, P., Rodrigo, S. 2005.Geotechnical properties of fly and bottom ash mixtures for use in highway embankments. *Journal of Geotechnical and Geo-Environmental Engineering* 131, 914-924.
- Bunn, T.F., Chambers, A.J., 1993. Experiences with dense phase hydraulic conveying of Vales point fly ash. *International Journal of Powder Handling and Processing* 5, 35-45.
- Chang, A.C., Lund, L.J., Page, A.L., Warneke, J.E., 1977. Physical properties of fly ash amended soils. *Journal of Environ Quality* 6, 267-270.
- DiGioia, A.M., Nuzzo, W.L., 1997.Fly ash as structural fill. *Journal of Powder Division ASCE* 98, 77-92.
- Dutta, B.K., Khanra, S., Mallick, D., 2009. Leaching of elements from coal fly ash- assessment of its potential for use in filling abandoned coal mines. *Fuel* 88, 1314-1323.
- Erol, M., Kucukbayrak, S., Ersoy-Mericboyu, A., 2007. Characterization of coal fly ash for possible utilization in glass production. *Fuel* 86, 706-714.
- Foner, H.A., Robl, T.L., Hower, J.C., Graham, U.M., 1999. Characterization of fly ash from Israel with reference to its possible utilization. *Fuel* 78, 215-223.
- Ghosh, C.N., Mondal, P.K., Prashant, 2006. Suitability of fly ash as a stowing material for underground coal mines- some studies. *Proc. 1st Asian Mining Congress, Kolkata*, 16-18.
- Guo, R.Q., Rohatgi, P.K., Nath, D., 1996. Compacting characteristics of aluminium-fly ash powder mixtures. *Journal of Material Science* 31, 5513-5519.
- Gupta, R.P., Wall, T.F., Kajigaya, I., Miyamae, S., Tsumita, Y., 1998. Computer controlled scanning electron microscopy of minerals in coal- implications for ash deposition. *Progress in Energy & Combustion Science* 24, 523-543.
- IS Codes, 1987 Compendium of Indian Standards on Soil Engineering, Part-I, Bureau of Indian Standards, Nov., New Delhi, India.
- Jirina, T., Jan, S., 2010. Reduction of surface subsidence risk by fly ash exploitation as filling material in deep mining areas. *Natural Hazards* 53, 251-258.
- Leonards, G.A., Bailey, B., 1982.Pulverized coal ash as structural fill. *Journal of Geotechnical Engineering Division, ASCE* 108, 517-531.
- Liu, G., Zhang, H., Gao, L., Zheng, L., Peng, Z., 2004.Petrological and mineralogical characterizations and chemical composition of coal ashes from power plants in Yanzhou mining district, China. *Fuel Process Technology* 85, 1635-1646.
- Metcalfe, R.D., Connor, J.N., Druskovich, D., Blackford, M.G., Short, K., 2006.The influence of fly ash morphology and phase distribution on collection in an electrostatic precipitator. Paper No. WC0083. Proceeding of

- Australian Institute of Physics, 17th National Congress, Brisbane.
- Minnick, L.J., 1959. Fundamental characteristics of pulverized coal fly ashes. *Proc. ASTM* 59, 1155-1177.
- Mishra, D., Das, S.K., 2010. A study of physico-chemical and mineralogical properties of Talcher coal fly ash for stowing in underground coal mines. *Materials Characterization* 61, 1252-1259.
- Mishra, M.K., Rao, K.U.M., 2006. Geotechnical characterization of fly ash composites for backfilling mine voids. *Journal of Geotechnical and Geological Engineering* 24, 1749-1765.
- Moreno, N., Querol, X., Andres, J.M., Stanton, K., Towler, M., Nugteren, H., 2005. Physico-chemical characteristics of European pulverized coal combustion fly ashes. *Fuel* 84, 1351-1363.
- Murty, A.V.S.R., 1996. Fly ash in construction of roads and embankments. *Ash ponds and Disposal Systems* (V.S.Raju et al., eds), Narosa publishing House, New Delhi, 222-37.
- Murty, A.V.S.R., 1998. Utilization of fly ash for embankment construction. *Proc. of Experience sharing meets on use of fly ash in roads and embankments*. CRRI, New Delhi, 5-20.
- Ozerskii, A.Y., Ozerskii, D.A., 2003. Disposal of ash and slag waste of the Berezovsk state regional power plant in the Berezovskii-1 mined-out space: a promising direction of environmental protection in the region. *Powder Technology & Engineering* 37, 248-251.
- Pandey, J.K., Kumbhakar, D., 2007. Coal ash as mine-fill: Possibilities & Prospects. *The Indian Mining & Engineering Journal* 46, 23-27.
- Pandian, N.S., 2004. Fly ash characterization with reference to geotechnical applications. *Journal of Indian Institute of Science* 84, 189-216.
- Pandian, N.S., Balasubramanian, S., 1999. Permeability and consolidation behaviour of fly ashes. *Journal of Testing & Evaluation* 27, 337-342.
- Pandian, N.S., Rajasekhar, C., Sridharan, A., 1998. Studies on the specific gravity of some Indian coal ashes. *Journal of Testing and Evaluation*, ASTM 26, 177-186.
- Ram, L.C., Masto, R.E., 2010. An appraisal of the potential use of fly ash for reclaiming coal mine spoil. *Journal of Environmental Management* 91, 603-617.
- Roode, M.V. 1987. X-ray Diffraction Measurement of Glass Content in fly ashes and slag. *Concrete Research* 17, 183-197.
- Sahu, K.C., 1991. Coal and fly ash problem. *Proc. Intl. Conf. on Environmental impact of coal utilization from raw materials to waste resources* (K.C. Sahu, ed.), Indian Institute of Technology, Bombay, pp: 11-12.
- Sarkar, A., Rano, A., Udaybhanu, G., Basu, A.K., 2006. A comprehensive characterization of fly ash from a thermal power plant in Eastern India. *Fuel Process Technology* 87, 259-277.
- Seshadri, V., Singh, S.N., Jain, K.K., Verma, A.K., 2005. Rheology of fly ash slurries at high concentrations and its application to the design of high concentration slurry disposal system (HCSD), *Proc of the International Conference on Fly Ash Utilization*, New Delhi, V.1.1-10.
- Shao, H., Liang, K., Zhou, F., Wang, G., Peng, F., 2004. Characterisation of cordierite-based glass ceramics produced from fly ash. *Non-Crystal Solids* 337, 157-160.
- Siddique, R., 2007. *Coal fly ash- waste materials and by-products in concrete*, Berlin Heidelberg: Springer, 177-234.
- Singh, D.N., Kolay, P.K., 2002. Simulation of ash-water interaction and its influence on ash characterization. *Journal of Progress in Energy and Combustion Science* 28, 267-299.
- Smith, D.K., Jenkins, R., 1996. The powder diffraction file: past, present, and future. *Journal of Research of the National Institute of Standards and Technology* 101, 259.
- Sridharan, A., Pandian, N.S., Rajasekhar, C., 1996. Geotechnical Characterization of pond ash. *Ash ponds and Disposal Systems* (V.S.Raju et al., eds), Narosa publishing House, New Delhi, 97-110.
- Vassilev, S.V., Vassileva, C.G., 2006. A new approach for the classification of coal fly ashes based on their origin, composition, properties, and behaviour. *Fuel* 86, 1490-1512.
- [1] White, S.C., Case, E.D., 1990. Characterization of fly ash from coal-fired power plants. *Journal of Material Science* 25, 5215-5219.

About 1st Author:



Prof. Hrushikesh Naik graduated in the year 1984 from the then Regional Engineering College (Presently NIT), Rourkela in Mining Engineering. He obtained his M.Tech. degree (Specialization in Open Cast Mining) from Indian Institute of Technology (ISM) University, Dhanbad. Served Coal India Limited for one year in an underground coal mines as under manager. Then he decided to serve his Alma Mater and joined as a faculty member in the year 1985 in the Department of Mining Engineering, NIT Rourkela. He was Head of the Department for three years and he was also Project Officer and Head of the Nodal Centre for Orissa (NTMIS). He visited Southern Illinois University, Carbondale, USA in the year 2006 and Kentucky University, Lexington, USA, in the year 2009 and Colorado School of Mines, Denver, USA in 2011 to upgrade his knowledge. To his credit he has got more than 25 research articles published in National and International Journals and Conference Proceedings. His areas of interest are Surface Mining, Mine Surveying, Fly Ash Management and Utilization.