



EFFECT OF SODIUM SILICATE ON STRENGTHENING BEHAVIOUR OF FLY ASH COMPACTS

Ranjit Kumar Panda\*, Jyoti Prakash Dhal and Subash Chandra Mishra

National Institute of Technology, Rourkela-769008, Odisha, India

ARTICLE INFO

Article History:

Received 13<sup>th</sup> November, 2011  
Received in revised form  
08<sup>th</sup> December, 2011  
Accepted 09<sup>th</sup> January, 2011  
Published online 29<sup>th</sup> February, 2012

Key words:

Fly ash, Sodium silicate, compacts,  
binder, multifaceted, globular and  
equiaxed.

ABSTRACT

This paper presents the work carried out for the improvement of mechanical properties of fly ash compacts by adding a binder. Here we added sodium silicate as a binder to the different weight fractions of fly ash, sand, gypsum and lime mixture and then compacted. These compacts were treated in normal water at different temperatures for seven days. Then compressive strength and microstructure for the different compacts were investigated. It was observed that the compressive strength of the fly ash compacts increased with addition of sodium silicate and the particles were dispersed and deviated from their globular equiaxed shape to multifaceted type in microstructure.

Copy Right, IJCR, 2012, Academic Journals. All rights reserved.

INTRODUCTION

Fly ash is being considered as waste material in large quantity, produced as a by-product from thermal power generation. It is creating severe environmental pollution; so much research is being conducted from more than two decades for its proper utilization in cement and brick production as well as to control environmental pollution in the surrounding areas of power plants (Koseoglu *et al.*, 2010; Demirbas, 1996; Cicek and Tanriverdi, 1997; Cengizler *et al.*, 2008; Kula *et al.*, 2001; Uslu and Arol, 2004; Shon *et al.*, 2009; Cultrone and Sebastián, 2009; Lingling *et al.*, 2005). Using fly ash to make bricks instead of cement and clay reduces greenhouse gas and slows down global warming because large amount of carbon dioxide is produced for manufacture cement and for clay bricks production much energy burned by fossil fuel.

The fly ash particles are spherical and have the same fineness as cement so that the silica is readily available for reaction (El-Didamony *et al.*, 2012). Fly ash is generally grey in color, abrasive, mostly alkaline, and refractory in nature. It contains different essential elements such as P, K, Ca, Mg and with trace amounts of Zn, Fe, Cu, Mn, B, and Mo. The pozzolanic properties and lime binding capacity of fly ash makes it useful for the production of bricks, cement and concrete (Ahmaruzzaman, 2010). Solidifying agents such as slag, calcined gypsum and dextrin are added in the production of fly ash-lime bricks (Chindaprasirt and Pimraksa, 2008). Fly ash bricks are more strength and an economical alternative to conventional burnt clay bricks (Kumar, 2002). Due to its high availability and excellent property, presently in Indian scenario, fly ash is utilized in different sectors such as cement manufacture/substitution, road and embankments, low lying

area filling, dyke rising, brick manufacturing, mine filling, agriculture and others (Dhadse *et al.*, 2008). Fly ash bricks exhibits excellent physico-chemical and mechanical properties, including low density, micro-porosity or nano-porosity, negligible shrinkage, high strength, thermal stability, high surface hardness, fire and chemical resistance than conventional clay bricks (Pofale and Deo, 2010; Kumar, 2000; Reddy and Gourav, 2011; Dry *et al.*, 2004; Mitra *et al.*, 2010). In the present investigation, compacts of fly ash, sand, lime and gypsum with various percentage additives of sodium silicate are prepared and treated in normal water, at room temperature, 50°C and 100°C to determine the compressive strength and microstructure.

MATERIALS AND METHODS

The following materials are used for manufacturing the compacts.

1. **Fly ash:** Fly ash was collected from the captive power plant (CPP-II) of Rourkela steel plant (RSP). The chemical composition of the fly ash is given in Table 1.
2. **Lime:** Hydrated lime of commercial grade was used in all mixtures. Lime was brought from market and was kept in air tight polythene bags. The results of chemical composition of the lime are given in Table 2.
3. **Gypsum:** Gypsum has been obtained as phosphogypsum, a site by-product from a plant manufacturing fertilizers and chemicals. Chemical composition of the used calcined phosphogypsum is presented in Table 3.
4. **Water:** Normal drinking water is used for compaction.

\*Corresponding author: physics.panda@gmail.com

## Production of test samples

The test samples were prepared by two steps:

### 1. Preparation of mixture

Numbers of test samples were prepared by mixing different compositions of raw materials (fly ash, lime, gypsum, sand and sodium silicate) with water. The various composition of the test mixture is given in Table 4.

### 2. Compaction of mixtures

Ten grams of mixture was taken for each composition and compacted by die and punch to make one samples. In this way six numbers of samples were prepared for each composition. Then the samples were dried for one day.

## Treatment

Then two samples of each composition kept in normal water at room temperature, at 50°C and at 100°C for seven days.

## Characterization

Compressive tests were carried out using INSTRON 1195. Microscopic studies to examine the morphology and distribution of particles were done by a JEOL 6480 LV scanning electron microscope (SEM). The secondary electron imaging was used with suitable accelerating voltages for the best possible resolution.

## RESULTS AND DISCUSSION

### Influence of binder on compressive strength

The compressive strength of each sample was measured with help of Instron 1195 after the treatment. Fig 1 represented the graph of compressive strength vs percentage of sodium silicate added for samples of composition fly ash (50.69%), sand (34.56%), lime (11.52%) and gypsum (3.22%), which shown that the compressive strength increased with percentage of sodium silicate and the samples treated at room temperature exhibit high compressive strength. Similarly, Fig 2 represented the graph of compressive strength vs percentage of sodium silicate added for samples of composition fly ash (34.56%), sand (50.69%), lime (11.52%) and gypsum (3.22%), which, also shown that the compressive strength increased with increasing percentage of sodium silicate and the samples treated at room temperature exhibit high compressive strength. It is expected that by adding sodium silicate, silicon-oxygen anions found in fly ash go into solution and form polymers which begin to coagulate in the liquid during curing. The alkali of the sodium silicate then reacts with silica present in fly ash in the glass phase, strengthening this process of polymerization and coagulation, ending with the generation of a water-stable silica gel. Dehydration of the silica gel and consolidation of the structure subsequently produces an increase in the strength of the bonds, resulting in the creation of a hard, solid material (Freidinand Erell, 1995).

**Table 1. Chemical composition of fly ash**

Constituents	Percentage (%)
Fe <sub>2</sub> O <sub>3</sub>	8.1
MgO	1.14
Al <sub>2</sub> O <sub>3</sub>	24.98
SiO <sub>2</sub>	55.85
P <sub>2</sub> O <sub>5</sub>	0.15
SO <sub>3</sub>	1.16
K <sub>2</sub> O	0.85
CaO	2.54
Na <sub>2</sub> O	0.2
TiO <sub>2</sub>	1.75
CO <sub>2</sub>	1.56

**Table 2. Chemical composition of lime**

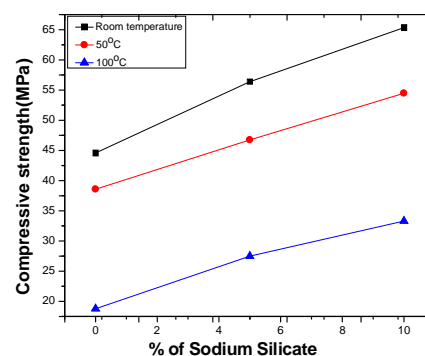
Constituent	Percentage (%)
CaO	62.55
Al <sub>2</sub> O <sub>3</sub> +SiO <sub>2</sub>	25.95
MgO	3.20
Loss of Ignition	7.95

**Table 3. Chemical composition of calcined phosphogypsum**

Constituent	Percentage (%)
CaSO <sub>4</sub> .2H <sub>2</sub> O	90.8
SiO <sub>2</sub>	1.67
Fe <sub>2</sub> O <sub>3</sub>	0.8
MgO	0.16

**Table 4. Composition of test samples**

Mixture Designation	Fly ash (Wt. fraction)	Sand (Wt. fraction)	Gypsum (Wt. fraction)	Lime (Wt. fraction)	Sodium silicate (Wt. fraction)
Mix-1	50.69	34.56	3.22	11.52	0
Mix-2	47.72	32.53	3.22	11.52	5
Mix-3	44.74	30.56	3.22	11.52	10
Mix-4	34.56	50.69	3.22	11.52	0
Mix-5	33.75	49.5	3.22	11.52	2
Mix-6	32.53	47.72	3.22	11.52	5



**Fig. 1. Compressive strength vs percentage of sodium silicate added for samples of composition fly ash (50.69%), sand (34.56%), lime (11.52%) and gypsum (3.22%).**

## Surface Morphology

The microstructures of the surface of samples were observed under scanning electron microscope and were shown in following Fig 3. From the surface morphology it was observed that, the particles were globular, equiaxed and diffusion had taken place at inter particle boundaries in the samples without sodium silicates (for figures a, d and g). When sodium silicate was added, the particles were gradually dispersed; with nearly

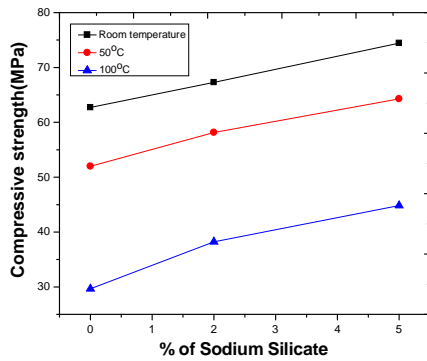


Fig. 2. Compressive strength vs percentage of sodium silicate added for samples of composition fly ash (34.56%), sand (50.69%), lime (11.52%) and gypsum (3.22%).

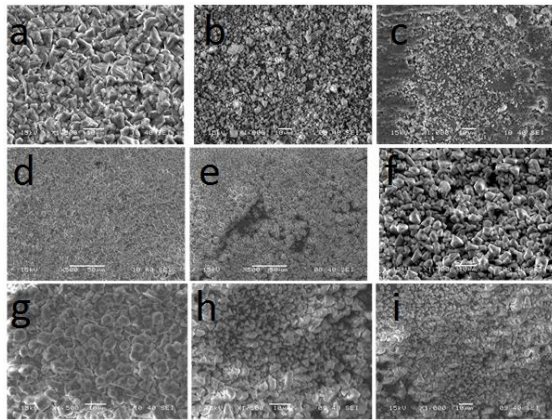


Fig. 3. SEM fractography of compacts: a) Mix-1, b) Mix-2, c) Mix-3, at room temperature, d) Mix-1, e) Mix-2, f) Mix-3, at 50°C and g) Mix-1, h) Mix-2, i) Mix-3, at 100°C.

uniform size, multiphase. Here cavities were observed in this micro structure due to water treatment. By observing all the figures we can tell that, by mixing sodium silicate the particles were deviated from their globular equiaxed shape to multifaceted type.

## Conclusions

From the above investigation, it is found that the compressive strength of the fly ash compacts is increasing with addition of sodium silicate, because it produces an increase in the strength of the bonds, resulting in the creation of a hard and solid material. From the surface morphology it is clear that by addition of sodium silicate, the particles are dispersed and deviated from their globular equiaxed shape to multifaceted type.

## REFERENCES

Koseoglu, K., Polat, M. and Polat, H. 2010. Encapsulating fly ash and acidic process waste water in brick structure. *Journal of Hazardous Materials*, 176: 957–964.

Demirbas, A. 1996. Optimizing the physical and technological properties of cements additives in concrete mixture. *Cement Concrete Res.*, 26: 1737–1744.

Cicek, T. and Tanriverdi, M. 2007. Lime based steam autoclaved fly ash bricks. *Constr. Build. Mater.*, 21: 1295–1300.

Cengizler, H., Çiçek T and Tanriverdi, M. 2008. Production of light weight bricks containing class F fly ash: *Proceedings of the 11th International Mineral Processing Symposium*, Belek Antalya, Turkey: the Middle East Technical University, pp. 995–1002.

Kula, I., Olgun, A., Erdogan, Y. and Sevinc, V. 2001. Effects of colemanite waste, coal bottom ash and fly ash on the properties of cement. *Cement Concrete Res.*, 31: 491–494.

Uslu, T. and Arol, A.I. 2004. Use of boron waste as an additive in red bricks. *Waste Manage.*, 24: 217–220.

Shon, C.-S., Saylak, D., Zollinger, D.G. 2009. Potential use of stockpiled circulating fluidized bed combustion ashes in manufacturing compressed earth bricks. *Constr. Build. Mater.*, 23: 2062–2071.

Cultrone, G. and Sebastián, E. 2009. Fly ash addition in clayey materials to improve the quality of solid bricks. *Construction and Building Materials*, 23: 1178–1184.

Lingling, X., Wei, G., Tao, W. and Nanru, Y. 2005. Study on fired bricks with replacing clay by fly ash in high volume ratio. *Construction and Building Materials*, 19: 243–247.

El-Didamony, H., El-Rahman, E.A. and Osman, R. M. 2012. Fire resistance of fired clay bricks–fly ash composite cement pastes. *Ceramics International*, 38: 201–209.

Ahmaruzzaman, M. 2010. A review on the utilization of fly ash. *Progress in Energy and Combustion Science*, 36: 327–363.

Kumar, S. 2002. A perspective study on fly ash–lime–gypsum bricks and hollow blocks for low cost housing development. *Construction and Building Materials*, 16: 519–525.

Dhadse, S., Kumari, P. and Bhagia, L. J. 2008. Fly ash characterization, utilization and Government initiatives in India-A review. *Journal of scientific and industrial research*, 67: 11–18.

Pofale, A. D. and Deo, S. V. 2010. Comparative Long Term Study of Concrete Mix Design Procedure for Fine Aggregate Replacement with Fly Ash by Minimum Voids Method and Maximum Density Method. *KSCE Journal of Civil Engineering*, 14(5):759–764.

Kumar, S. 2000. Fly ash - lime - phosphogypsum cementitious binder: A new trend in bricks. *Materials and Structures/Matériaux et Constructions*, 33: 59–64.

Venkatarama Reddy, B. V. and Gourav, K. 2011. Strength of lime–fly ash compacts using different curing techniques and gypsum additive. *Materials and Structures*, 44: 1793–1808.

Dry, C., Meier, J. and Bukowski, J. 2004. Sintered coal ash/flux materials for building materials. *Materials and Structures/Matériaux et Constructions*, 37: 114–121.

Mitra, S., Ahmad, F., Das, A. K., Das, S. and Dutta, B. K. 2010. Effect of curing conditions and ionic additives on properties of fly ash–lime compacts. *Bull. Mater. Science*, 33: 185–190.

Freidin, K. and Erell, E. 1995. Bricks Made of Coal Fly-Ash and Slag Cured in the Open Air. *Cement and Concrete Composites*, 17: 289–300.